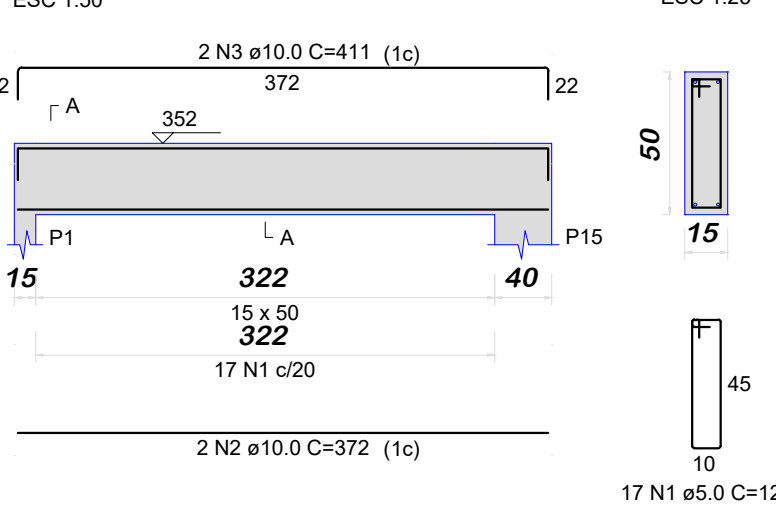
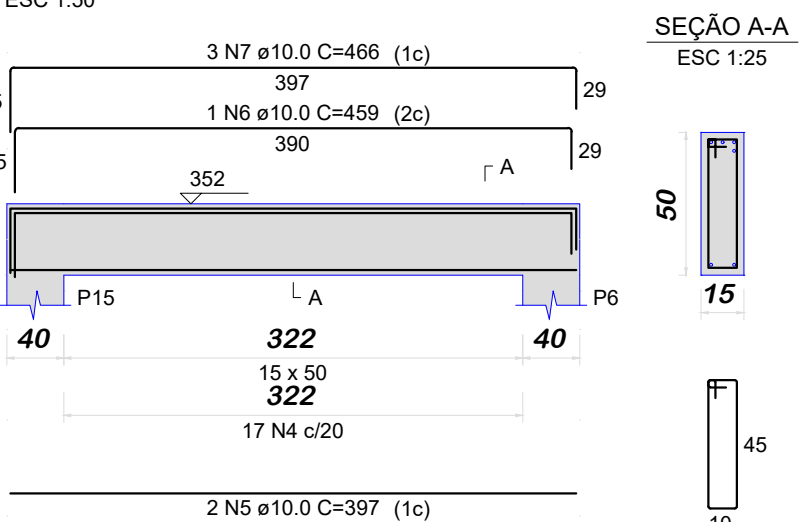


VC - VIGAS DE COBERTURA

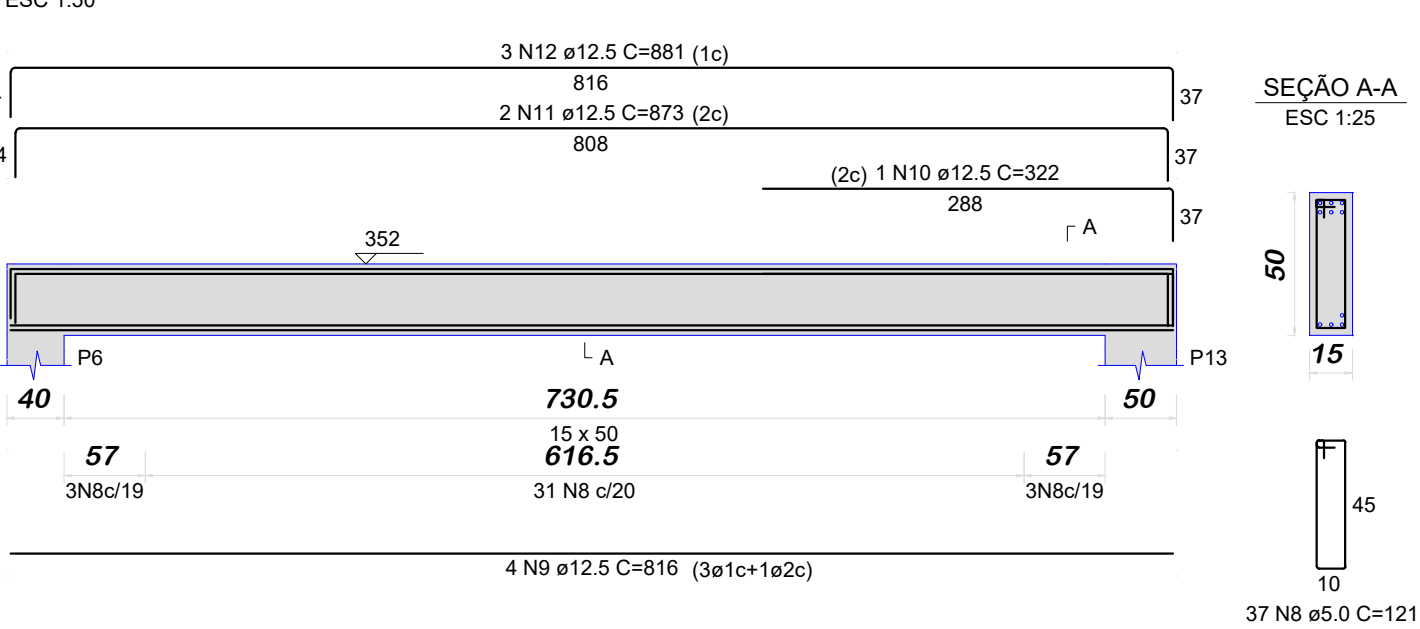
VC201 (15 x 50)



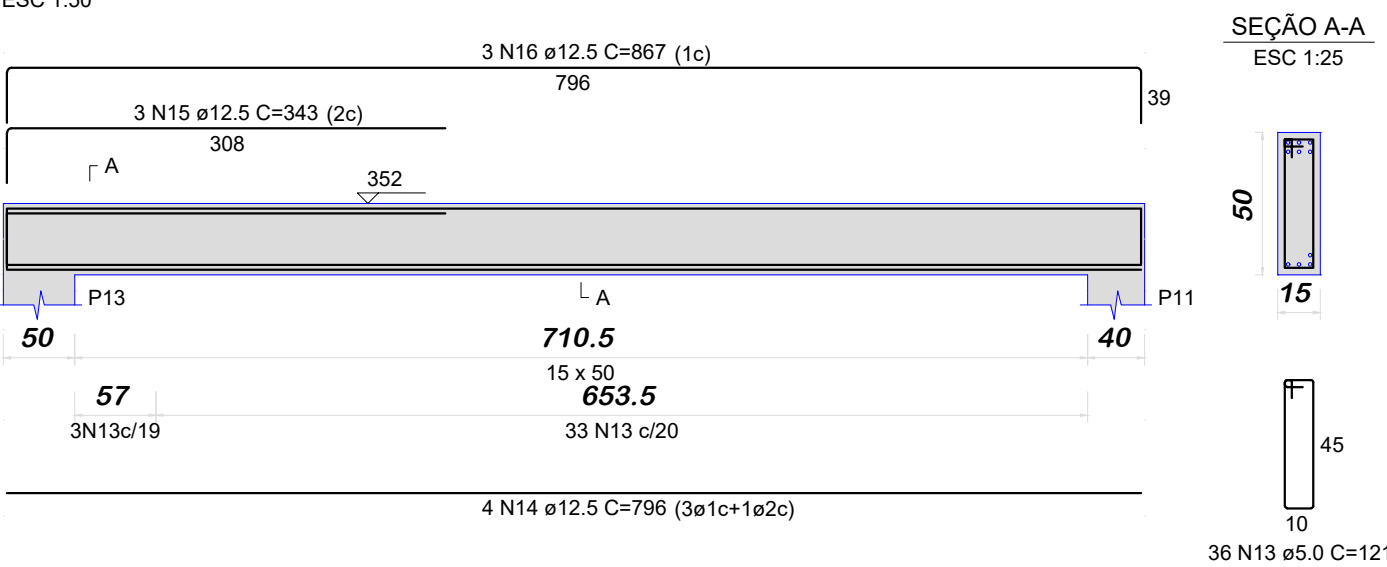
VC202 (15 x 50)



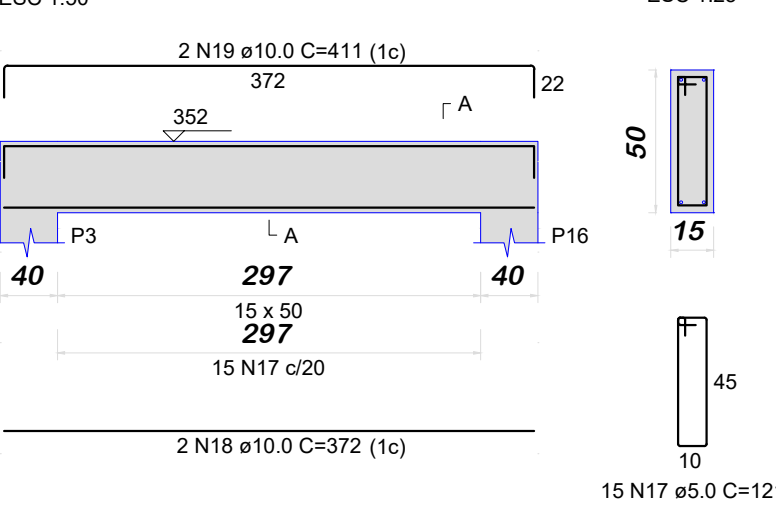
VC203 (15 x 50)



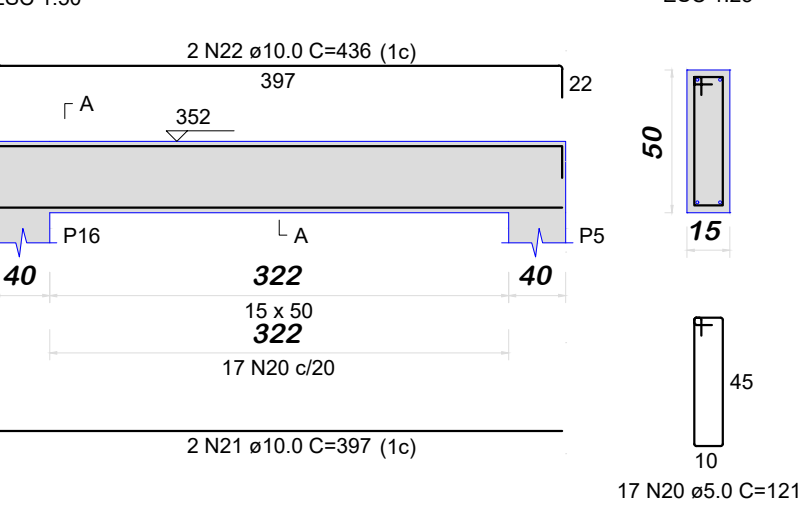
VC204 (15 x 50)



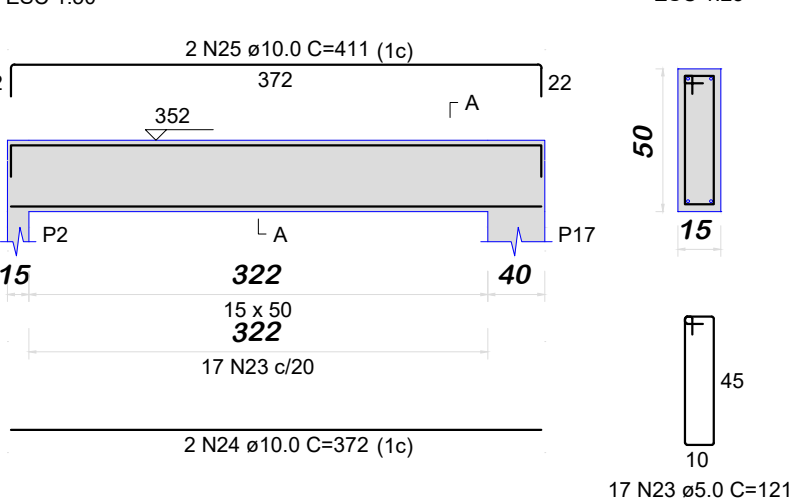
VC205 (15 x 50)



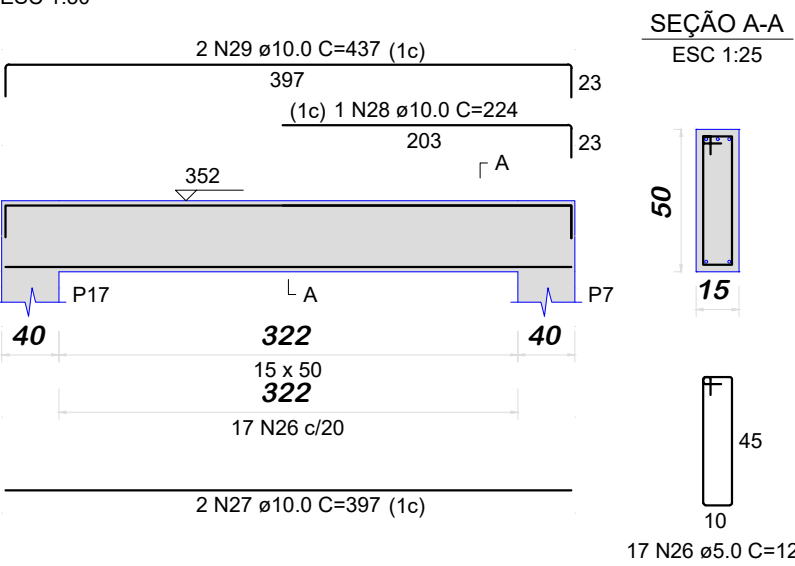
VC206 (15 x 50)



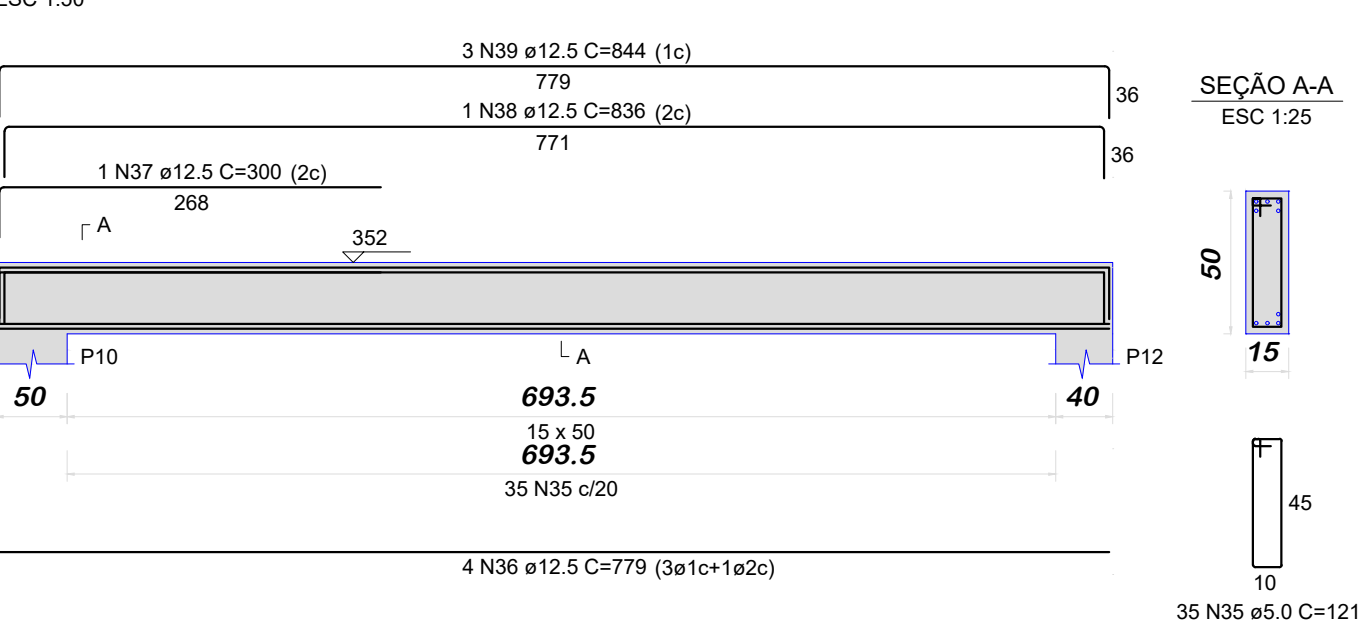
VC207 (15 x 50)



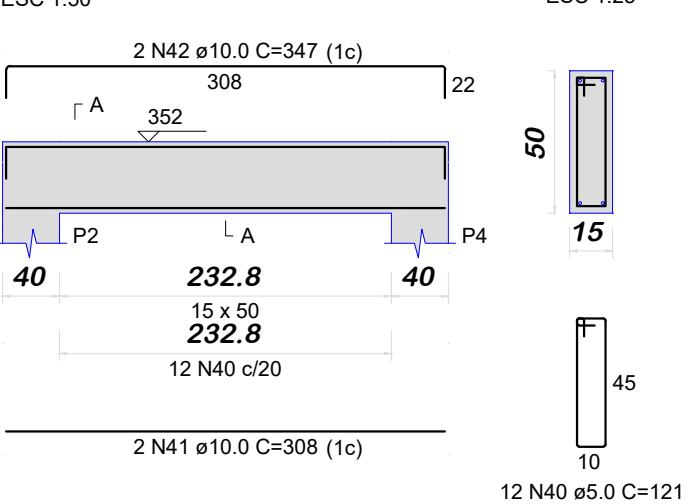
VC208 (15 x 50)



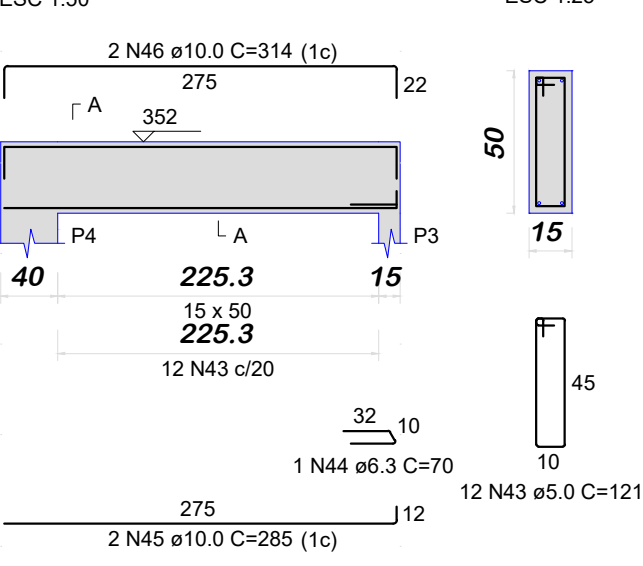
VC210 (15 x 50)



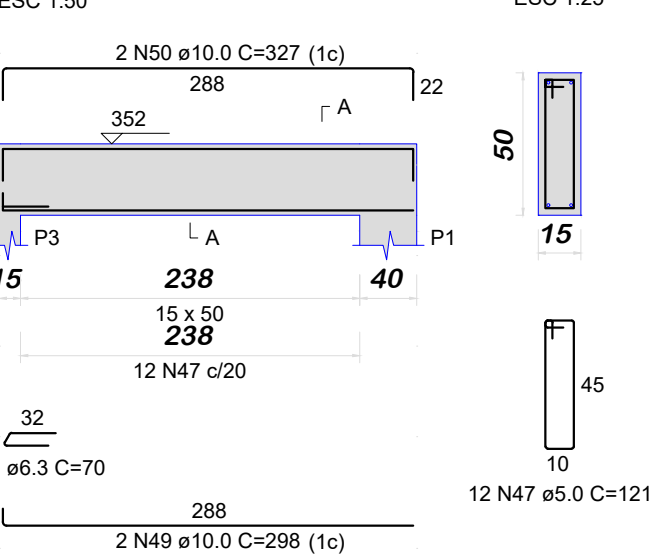
VC211 (15 x 50)



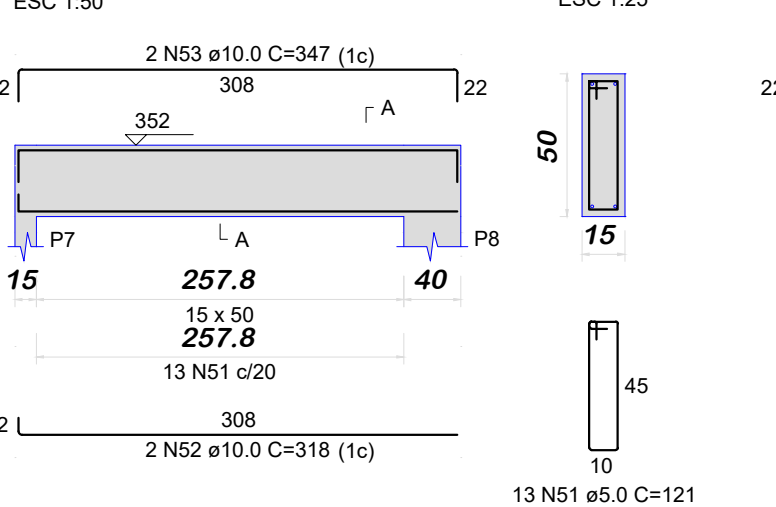
VC212 (15 x 50)



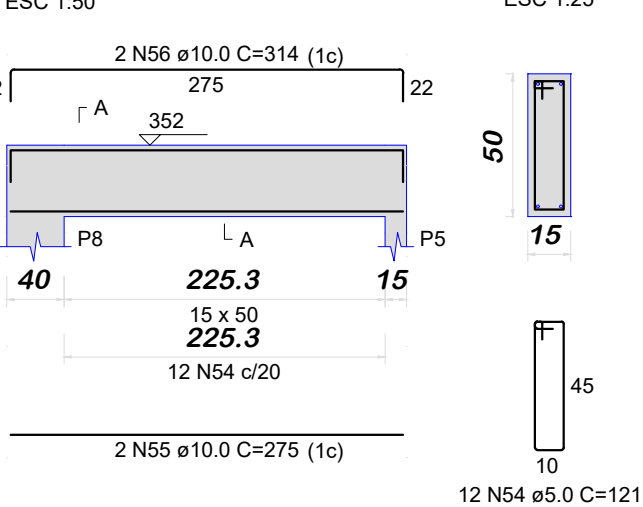
VC213 (15 x 50)



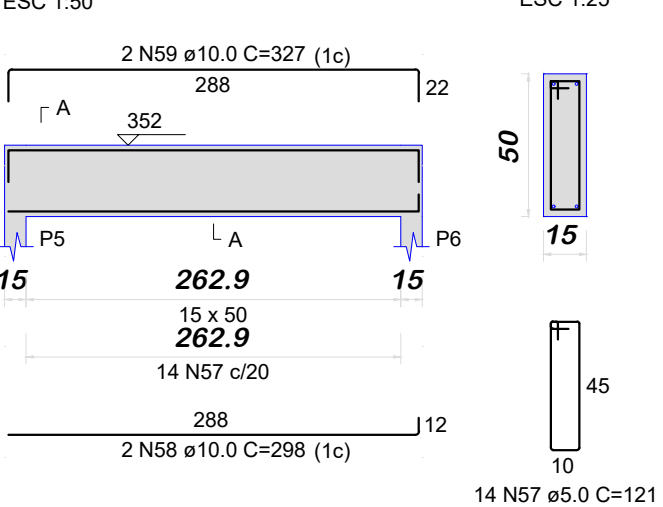
VC214 (15 x 50)



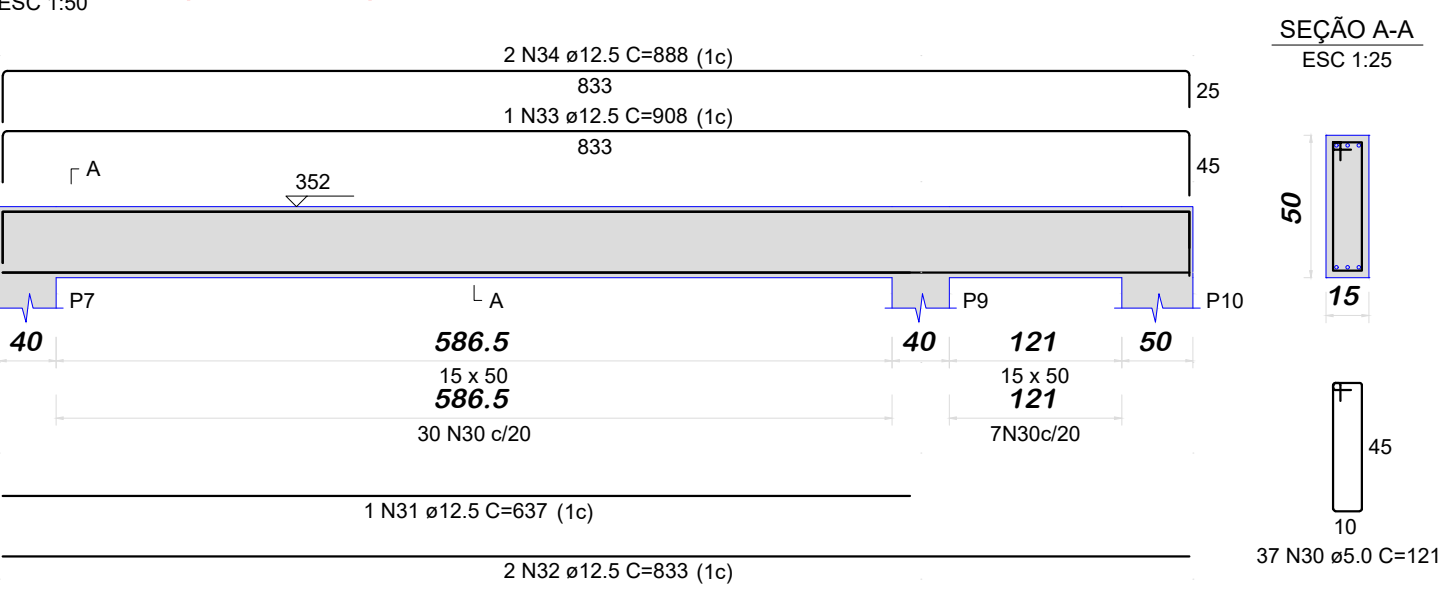
VC215 (15 x 50)



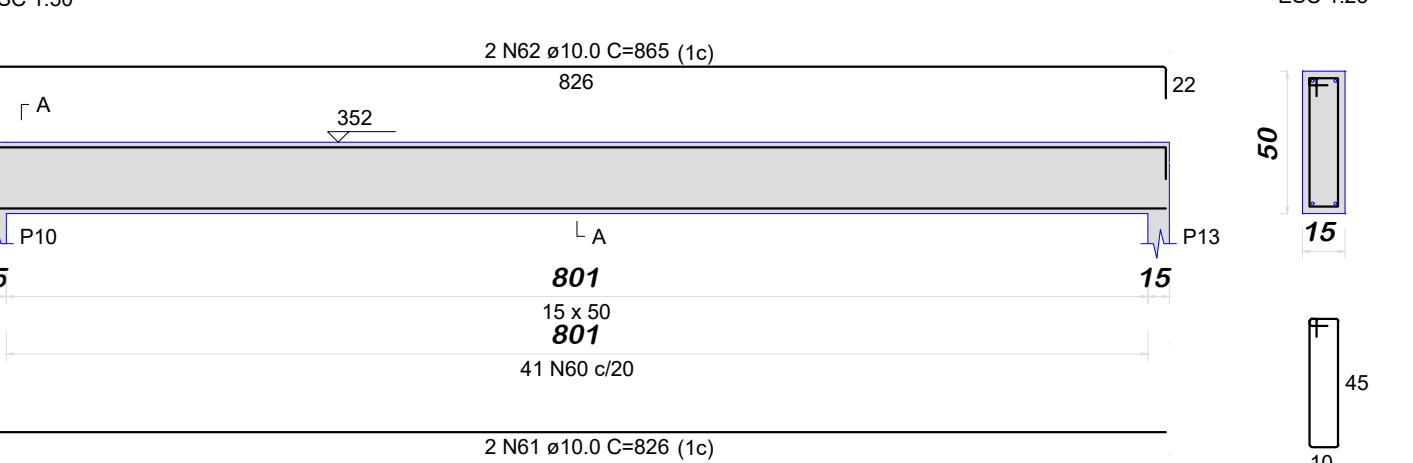
VC216 (15 x 50)



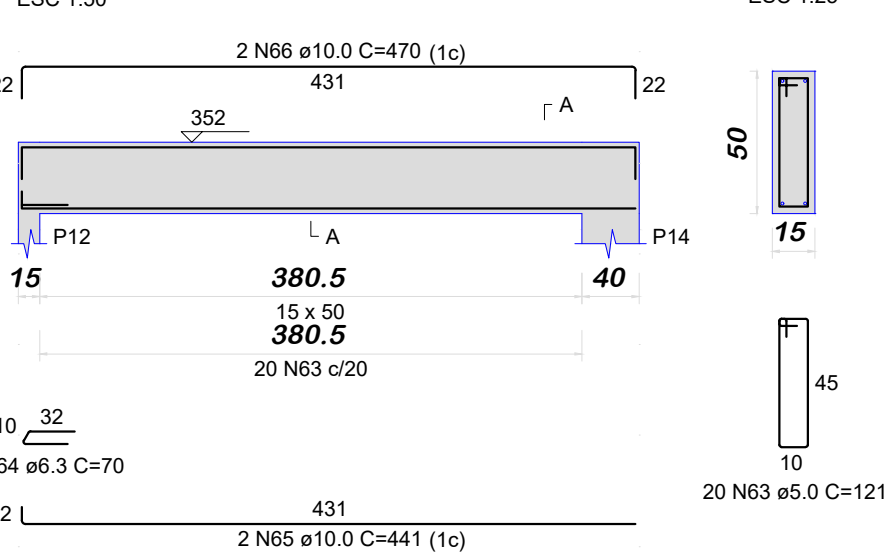
VC209 (15 x 50)



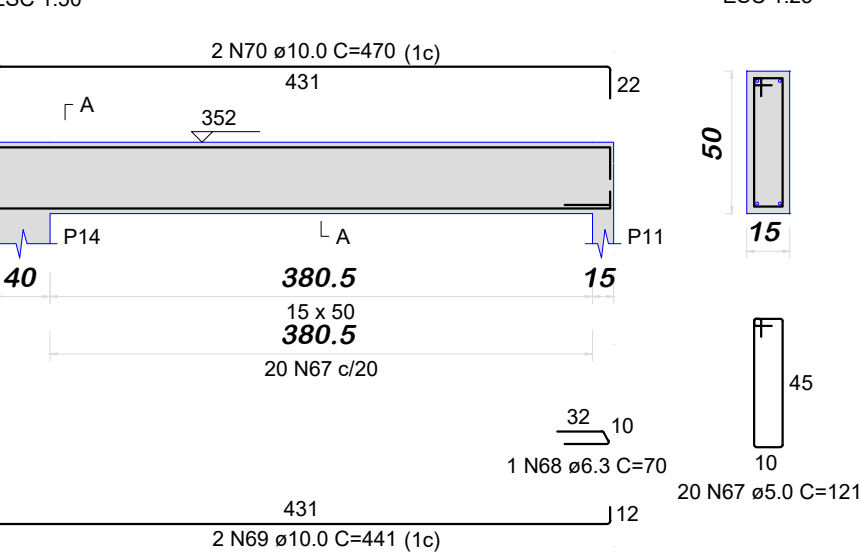
VC217 (15 x 50)



VC218 (15 x 50)



VC219 (15 x 50)



RELAÇÃO DO AÇO					
ELEMENTO	AÇO	N	DIAM (mm)	QUANT	C.TOTAL (cm)
VC201	CA60	1	5.0	17	2057
	CA50	2	10.0	2	372
	CA50	3	10.0	2	411
VC202	CA60	4	5.0	17	2057
	CA50	5	10.0	2	397
	CA50	6	10.0	1	459
VC203	CA50	7	10.0	3	466
	CA60	8	5.0	37	121
	CA50	9	12.5	4	816
VC204	CA50	10	12.5	1	322
	CA50	11	12.5	2	873
	CA50	12	12.5	3	881
VC205	CA60	13	5.0	36	121
	CA50	14	12.5	4	796
	CA50	15	12.5	3	343
VC206	CA50	16	12.5	3	867
	CA60	17	5.0	15	121
	CA50	18	10.0	2	372
VC207	CA50	19	10.0	2	411
	CA60	20	5.0	17	121
	CA50	21	10.0	2	397
VC208	CA50	22	10.0	2	436
	CA60	23	5.0	17	121
	CA50	24	10.0	2	372
VC209	CA50	25	10.0	2	411
	CA60	26	5.0	17	121
	CA50	27	10.0	2	397
VC210	CA50	28	10.0	1	224
	CA50	29	10.0	2	437
	CA60	30	5.0	37	121
VC211	CA50	31	12.5	1	637
	CA50	32	12.5	2	833
	CA50	33	12.5	1	908
VC212	CA50	34	12.5	2	888
	CA60	35	5.0	35	121
	CA50	36	12.5	4	779
VC213	CA50	37	12.5	1	300
	CA50	38	12.5	1	836
	CA50	39	12.5	3	844
VC214	CA60	40	5.0	12	121
	CA50	41	10.0	2	308
	CA50	42	10.0	2	347
VC215	CA60	43	5.0	12	121
	CA50	44	6.3	1	70
	CA50	45	10.0	2	285
VC216	CA50	46	10.0	2	314
	CA60	47	5.0	12	121
	CA50	48	6.3	1	70
VC217	CA50	49	10.0	2	298
	CA50	50	10.0	2	327
	CA50	51	5.0	13	121
VC218	CA50	52	10.0	2	318
	CA50	53	10.0	2	347
	CA60	54	5.0	12	121
VC219	CA50	55	10.0	2	275
	CA50	56	10.0	2	314
	CA60	57	5.0	14	121

RESUMO DO AÇO				
AÇO	DIAM (mm)	C.TOTAL (m)	QUANT + 10% (Barras)	PESO + 10% (kg)
CA50	6.3	2.8	1	12 m
	10.0	254.5	24	12 m
	12.5	265.6	25	12 m
CA60	5.0	485.2	-	rolo (170 kg)
PESO TOTAL (kg)				
CA50	454.8			
CA60	82.3			

Volume de concreto (C-30) = 5.81 m³
Área de forma = 72.10 m²

PROJETO ESTRUTURAL

RESIDENCIAL

ARMADURAS - BLOCOS DE FUNDAÇÃO E VIGAS BALDRAME

ENDEREÇO: RUA OSVALDO TEIXEIRA FÉLIX, Nº 55 - JD. ITÁLIA - ARANDU/SP

PROP.: PREFEITURA MUNICIPAL DE ARANDU

folha

1/1

Escala Indicadas

Rev:00 / 03-07-2023